

SAFETY JOGGER

TACTICAL



Архангельск (8182)63-90-72
Астана (7172)727-132
Астрахань (8512)99-46-04
Барнаул (3852)73-04-60
Белгород (4722)40-23-64
Брянск (4832)59-03-52
Владивосток (423)249-28-31
Волгоград (844)278-03-48
Вологда (8172)26-41-59
Воронеж (473)204-51-73
Екатеринбург (343)384-55-89

Иваново (4932)77-34-06
Ижевск (3412)26-03-58
Иркутск (395)279-98-46
Казань (843)206-01-48
Калининград (4012)72-03-81
Калуга (4842)92-23-67
Кемерово (3842)65-04-62
Киров (8332)68-02-04
Краснодар (861)203-40-90
Красноярск (391)204-63-61
Курск (4712)77-13-04
Липецк (4742)52-20-81

Магнитогорск (3519)55-03-13
Москва (495)268-04-70
Мурманск (8152)59-64-93
Набережные Челны (8552)20-53-41
Нижегород (831)429-08-12
Новокузнецк (3843)20-46-81
Новосибирск (383)227-86-73
Омск (3812)21-46-40
Орел (4862)44-53-42
Оренбург (3532)37-68-04
Пенза (8412)22-31-16

Пермь (342)205-81-47
Ростов-на-Дону (863)308-18-15
Рязань (4912)46-61-64
Самара (846)206-03-16
Санкт-Петербург (812)309-46-40
Саратов (845)249-38-78
Севастополь (8692)22-31-93
Симферополь (3652)67-13-56
Смоленск (4812)29-41-54
Сочи (862)225-72-31
Ставрополь (8652)20-65-13

Сургут (3462)77-98-35
Тверь (4822)63-31-35
Томск (3822)98-41-53
Тула (4872)74-02-29
Тюмень (3452)66-21-18
Ульяновск (8422)24-23-59
Уфа (347)229-48-12
Хабаровск (4212)92-98-04
Челябинск (351)202-03-61
Череповец (8202)49-02-64
Ярославль (4852)69-52-93

Киргизия (996)312-96-26-47 Казахстан (772)734-952-31 Таджикистан (992)427-82-92-69

<http://safetyjogger.nt-rt.ru> || sgg@nt-rt.ru



SAFETY JOGGER

TACTICAL

SRC certified slip resistance



Almost every Safety Jogger product is provided with an SRC certified slip resistant sole, meaning the slip resistance of the sole was tested on a ceramic tile wetted with a dilute soap solution and on a smooth steel plate with glycerol. **Safety Jogger soles pass both tests with glance** and do not only fulfill the minimum standards (SRA/SRB), but exceed them remarkably.

The consequences of an accident are costing the society and individuals more than the purchase of a well performing Safety Jogger tactical boot! All Safety Jogger products are tested in laboratory conditions to be granted with a slip resistant rating. However, there are shoes out there described as 'slip resistant' or 'improved grip performance' that haven't been formally tested. You can be 100% sure that safety footwear is slip resistant when you identify a slip resistant rating SRA, SRB or SRC.

SRA + **SRB** = **SRC**

SRA slip resistant soles are tested on a ceramic tile wetted with dilute soap solution.

SRB slip resistant soles are tested on smooth steel with glycerol.

SRC slip resistant soles pass both SRA and SRB slip resistance tests.



**self-cleaning
outsole profile**



SJ Hybrid insole



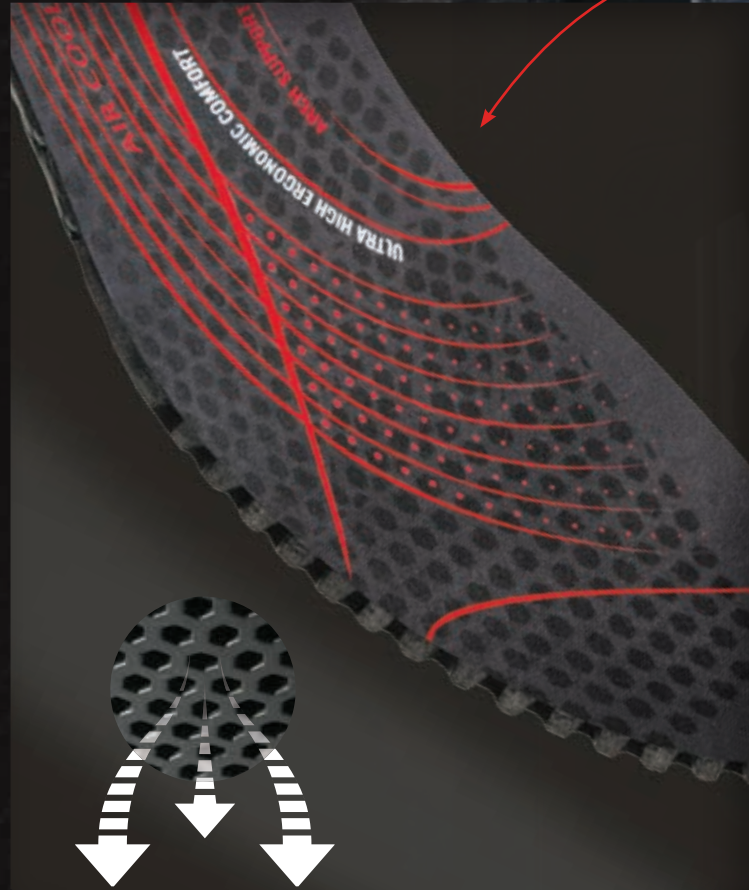
The SJ Hybrid insole is developed with an exceptional perforated structure. This ensures lightness, air breathability and comfort all day long. The SJ Hybrid insole takes full-surface foot support to the next level while maintaining all other features such as shock impact zone, arch support, shock absorption, electrostatic discharge. With the SJ Hybrid insole, your feet will feel comfortable all day long.

waterproof upper



Boots labeled 'waterproof' provide the highest quality level of protection from water and liquids. They keep your feet comfortably dry in numerous environments.

Safety Jogger waterproof boots resist water penetration far up the standard.





Outsole features

- Compression moulded **Phylon** midsole
- Composite shank providing **light weight** rigidity and torsional control
- Oil resistance and up to 300°C **heat-resistance Phylon rubber** outsole
- Textured traction heel pad
- **SRC** anti-slip with siping
- Heel anchor
- Ladder grip

Product features

Upper	Leather + Cordura®
Sole	Phylon/rubber
Toecap	-
Midsole	-
Lining	Coolmax® + Sympatex® moisture tech membrane
Insole	Ergonomic breathable SJ Hybrid
Category	02 / SRC WR FO HRO
Weight	509 gr. / 1,12 lb
Size range	EU 38-48 • UK 5-13 • US 5.5-13.5 • CM 25-31.5



MID-CUT ALLROUND TACTICAL BOOT

ARMOUR 02

EN ISO20347:2012 02 SRC WR FO HRO
ASTM F2892-18

- **Full grain** premium waterproof **leather** and hardwearing breathable nylon panels
- Fully sealed waterproof sock **Sympatex lining** + Coolmax moisture wicking lining for great **breathability, waterproof** and **comfort**
- Gusseted tongue with reinforced leather pad
- Completely **metal-free**, airport-friendly
- Anti fray double stitching for best strength and anti abrasion
- **Highly breathable**
- Anti-static construction
- Extra protection heel design

SYMPATEX®
lining

WATERPROOF
upper



extreme
LIGHT
boot

**SAFETY
JOGGER**
TACTICAL

ENGINEERED
IN EUROPE



STAND UP TO THE TOUGHEST CONDITIONS

ARMOUR 02

SympoTex®

SAFETY JOURNEY
TACTICAL



Outsole features

- Compression moulded ergonomic **Phylon** midsole
- Composite shank, providing **light weight** rigidity and torsional control
- Oil resistance and up to 300°C **heat resistance Phylon rubber** outsole
- Textured traction heel pad
- **SRC** anti-slip with siping
- Heel anchor
- Ladder grip

Product features

Upper	Leather + Cordura®
Sole	Phylon/rubber
Toecap	Composite
Midsole	Puncture resistant SJ Flex
Lining	Coolmax® + unbranded waterproof membrane
Insole	Ergonomic breathable SJ Hybrid
Category	S3 / SRC WR HRO
Weight	700 gr. / 1,54 lb
Size range	EU 38-48 • UK 5-13 • US 5.5-13.5 • CM 25-31.5



MID-CUT ALLROUND TACTICAL BOOT

TROOPER S3

EN ISO20345:2011 S3 SRC WR HRO
ASTM F2413-18

- **Full grain** premium waterproof **leather** and hardwearing breathable nylon panels
- Puncture resistant SJ Flex midsole and 200 joule anti-impact composite toecap
- Medial side waterproof **sealed zipper** to support in a quick donning and doffing
- Fully sealed **waterproof** sock + Coolmax moisture wicking lining
- Gusseted tongue with reinforced leather pad
- Completely **metal-free**, airport-friendly
- Anti fray double stitching for best strength and anti abrasion
- Anti-static construction
- Extra protection heel design

ZIPPER
waterproof sealed



WATERPROOF
upper



**SAFETY
JOGGER**
TACTICAL

**ENGINEERED
IN EUROPE**



Outsole features

- Strong shank, providing **light weight** rigidity and torsional control
- Oil resistance and up to 300°C **heat resistance** rubber outsole
- Textured traction heel pad.
- **SRA** anti slip with siping.
- Heel anchor
- Ladder grip

Product features

Upper	Leather + nylon
Sole	PU/PU
Toecap	-
Midsole	-
Lining	Breathable technomesh
Insole	Ergonomic breathable SJ Hybrid
Category	OB / SRA FO HRO
Weight	562 gr. / 1,24 lb
Size range	EU 38-47 • UK 5-12 • US 5.5-13 • CM 25-31



HIGH-CUT ALLROUND TACTICAL BOOT

TACTIC OB

EN ISO20347:2012 OB SRA FO HRO

- **Top leather** and hardwearing breathable nylon panels with reinforced structure
- Medial side **zipper** with security flap
- BKmesh wicking lining
- Hardwear tongue with reinforced structure
- Completely **metal-free**, airport-friendly
- Anti fray tripple stitching for best strength and anti-abrasion
- Extra protected heel design
- Extreme lightweight of 562 gram/feet

This model can be modified
as from 1.500 minimum order quantity.

ZIPPER
with security
flap



**SAFETY
JOGGER**
TACTICAL

**ENGINEERED
IN EUROPE**



Outsole features

- Strong shank, providing **light weight** rigidity and torsional control
- Oil resistance and up to 300°C **heat-resistance** rubber outsole
- Textured traction heel pad
- **SRA** anti-slip with siping
- Anti-static structure
- Heel anchor
- Ladder grip

Product features

Upper	Leather + nylon
Sole	PU/PU
Toecap	-
Midsole	-
Lining	Breathable technomesh
Insole	Ergonomic breathable SJ Hybrid
Category	OB / SRA FO HRO
Weight	550 gr. / 1,21 lb
Size range	EU 38-47 • UK 5-12 • US 5.5-13 • CM 25-31



HIGH-CUT ALLROUND DESERT BOOT

DUNE OB

EN ISO20347:2012 OB SRA FO HRO

- **Leather** and hardwearing breathable nylon panels
- Medial side **zipper** with security flap to support in a quick donning and doffing
- Meshnylon lining
- Hardwearing tongue
- Completely **metal-free**, airport-friendly
- Anti fray tripple stitching for best strength and anti abrasion
- Extra protection heel design
- **Extreme lightweight** of 550gram/feet

This model can be modified as from 1.500 minimum order quantity.

ZIPPER
with security
flap



**SAFETY
JOGGER**
TACTICAL

**ENGINEERED
IN EUROPE**



Outsole features

- Extreme lightweight **Phylon + rubber** outsole with best bending flexibility texture and oil resistance
- Compression moulded hybrid honeycomb insole, long lasting stability
- Textured traction heel pad
- **SRC** anti-slip
- Heel anchor
- Tested and certified with EN20345

Product features

Upper	Leather + nylon
Sole	Impact oil resistant Phylon + natural rubber
Toecap	Nano carbon
Midsole	Flexible light puncture resistant
Lining	Breathable technomesh + unbranded waterproof membranee
Insole	Ergonomic breathable SJ Hybrid
Category	S3 / SRC ESD WR
Weight	625 gr. / 1,38 lb
Size range	EU 35-47 • UK 3-12 • US 3-13 • CM 23-31



HIGH-CUT LIGHTWEIGHT ALLROUND TACTICAL BOOT

SHARK S3

EN ISO 20345:2011 S3 SRC ESD WR
ASTM F2413-18

- **Full grain** premium soft **leather** and hard-wearing breathable nylon panels
- **Lightweight** Aramid puncture resistant midsole: more flexibility with high tenacity
- 200 joule anti-impact carbon nano fiber toecap: 50% less weight than normal toecap
- Medial side waterproof sealed **zipper**
- Fully sealed **waterproof** sock + Coolmax® moisture wicking lining
- Hardwear tongue with reinforced structure
- Completely **metal-free**, airport-friendly
- **ESD** static-discharged construction
- Speed lacing construction for fast lacing
- Outsole for extraordinary grip even in wet conditions
- Extreme lightweight

extreme
LIGHT
boot



ZIPPER
waterproof sealed



WATERPROOF
upper

**SAFETY
JOGGER**
TACTICAL

**ENGINEERED
IN EUROPE**

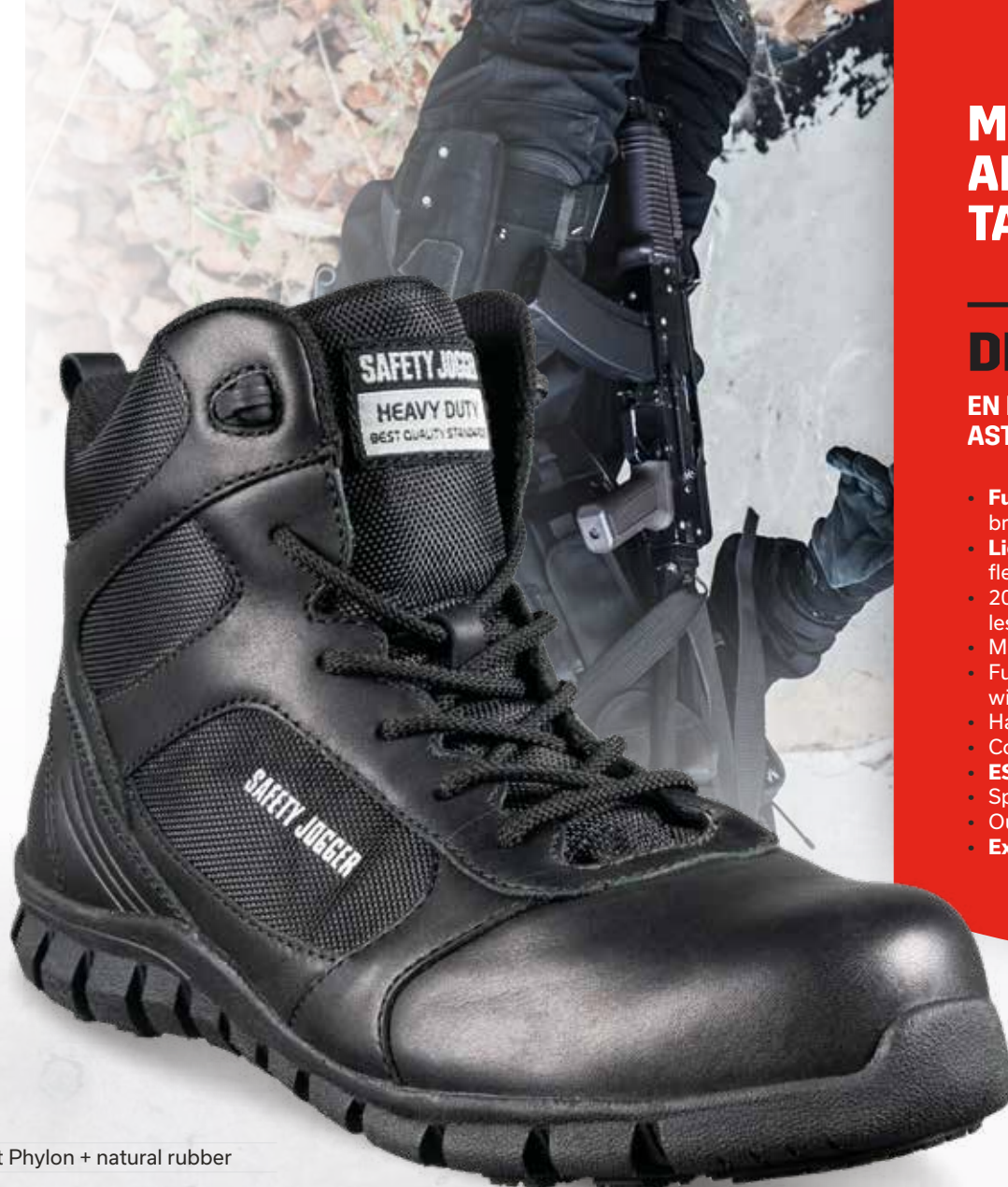


Outsole features

- Extreme lightweight **Phylon + rubber** outsole with best bending flexibility texture and oil resistance
- Compression moulded hybrid honeycomb insole, long lasting stability
- Textured traction heel pad
- **SRC** anti-slip
- Heel anchor zone
- Tested and certified with EN20345

Product features

Upper	Leather + nylon
Sole	Impact oil resistant Phylon + natural rubber
Toecap	Nano carbon
Midsole	Flexible light puncture resistant
Lining	Breathable technomesh
Insole	Ergonomic breathable SJ Hybrid
Category	S3 / SRC ESD
Weight	499 gr. / 1,1 lb
Size range	EU 38-47 • UK 5-12 • US 5.5-13 • CM 25-31



MID-CUT LIGHTWEIGHT ALLROUND TACTICAL BOOT

DRAGON S3

EN ISO 20345:2011 S3 SRC ESD
ASTM F2413-18

- **Full grain** premium soft **leather** and hard-wearing breathable nylon panels
- **Lightweight** Aramid puncture resistant midsole: more flexibility with high tenacity
- 200 joule anti-impact carbon nano fiber toecap: 50% less weight than normal toecap
- Medial side waterproof sealed **zipper**
- Fully sealed **waterproof** sock + Coolmax® moisture wicking lining
- Hardwear tongue with reinforced structure
- Completely **metal-free**, airport-friendly
- **ESD** static-discharged construction
- Speed lacing construction for fast lacing
- Outsole for extraordinary grip even in wet conditions
- **Extreme lightweight**

extreme
LIGHT
boot



**SAFETY
JOGGER**
TACTICAL

ENGINEERED
IN EUROPE

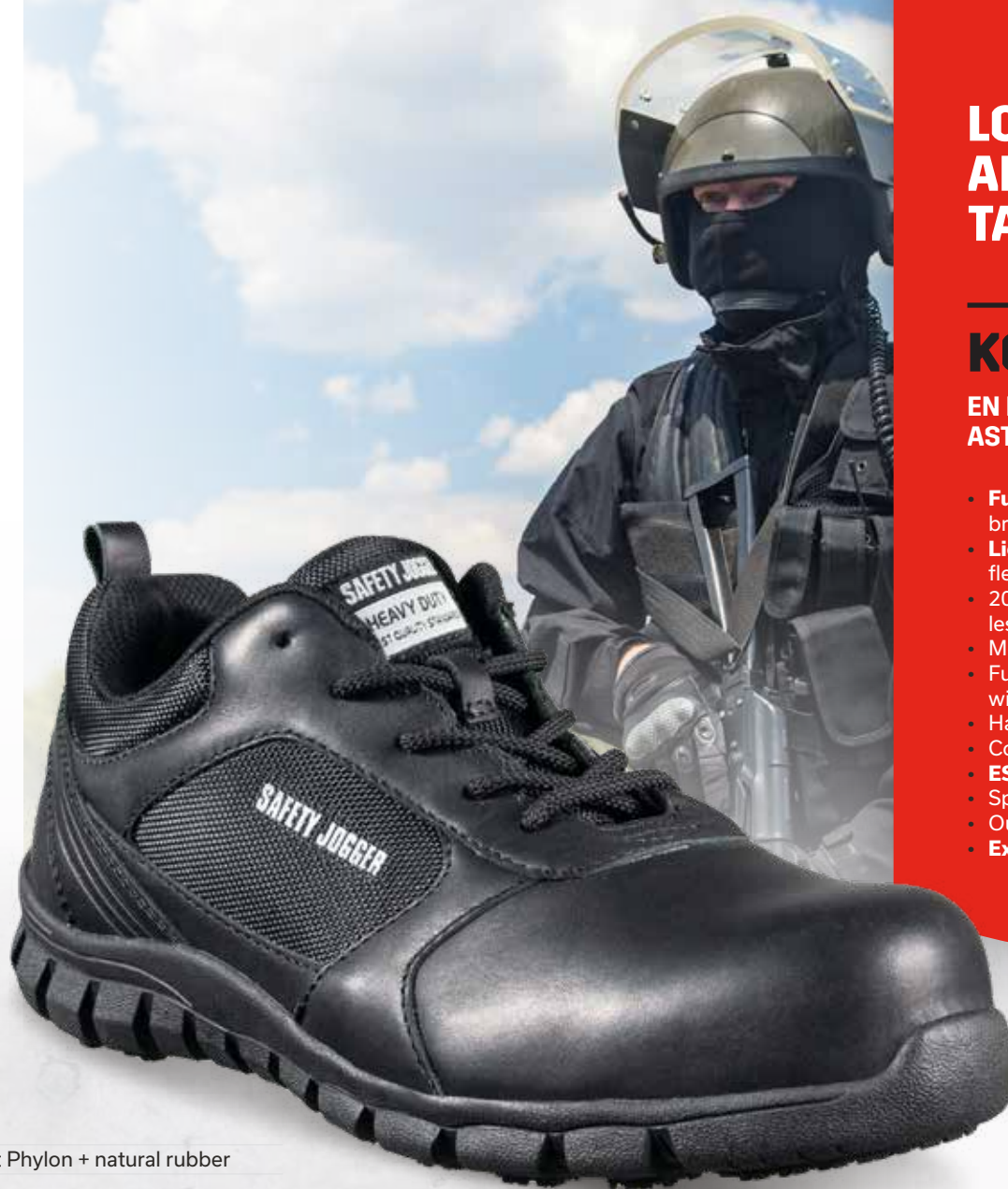


Outsole features

- Extreme lightweight **Phylon + rubber** with best bending flexibility texture and oil resistance
- Compression moulded hybrid honeycomb insole, long lasting stability
- Oil resistance
- Textured traction heel pad, **SRC** anti-slipping level
- Heel anchor
- Tested and certified with EN20345

Product features

Upper	Leather + nylon
Sole	Impact oil resistant Phylon + natural rubber
Toecap	Nano carbon
Midsole	Flexible light puncture resistant
Lining	Breathable technomesh
Insole	Ergonomic breathable SJ Hybrid
Category	S3 / SRC ESD
Weight	445 gr. / 0,98 lb
Size range	EU 35-47 • UK 3-12 • US 3-13 • CM 23-31



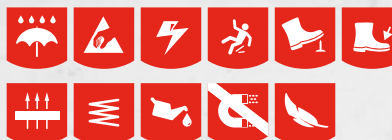
LOW-CUT LIGHTWEIGHT ALLROUND TACTICAL BOOT

KOMODO S3

EN ISO 20345:2011 S3 SRC ESD
ASTM F2413-18

- **Full grain** premium soft **leather** and hard-wearing breathable Nylon panels
- **Lightweight** Aramid puncture resistant midsole: more flexibility with high tenacity
- 200 joule anti-impact carbon nano fiber toecap: 50% less weight than normal toecap
- Medial side waterproof sealed **zipper**
- Fully sealed **waterproof** sock + Coolmax® moisture wicking lining
- Hardwear tongue with reinforced structure
- Completely **metal-free**, airport-friendly
- **ESD** static-discharged construction
- Speed lacing construction for fast lacing
- Outsole for extraordinary grip even in wet conditions
- **Extreme lightweight**

extreme
LIGHT
boot



**SAFETY
JOGGER**
TACTICAL

ENGINEERED
IN EUROPE



**BOOTS
THAT
MAKE YOU
MISSION
READY**

SHARK S3



LAB QUALITY IS KEY

Quality is key in our organization. By developing in our own facilities and by inspecting all materials in the company's specialized test laboratory, we can monitor every aspect of the products we produce. As a result, we got certified by the most known institutes in the industry and we can guarantee that our products meet the highest norms when it comes to protection.

R&D INNOVATION IN EVERY STEP

From the well-considered design and construction to the final product distribution, Safety Jogger controls every step of the process. Advanced research & development facilities in Europe and Asia make sure all products are manufactured with the latest technological features and according to Safety Jogger's quality standards. Thanks to the knowledge of our experienced footwear professionals, the continuous investments in training and innovation and our motivated employees, we are able to exceed your expectations when it comes to functionality, product design and service.



International size conversion chart

EU	35	36	37	38	39	40	41	42	43	44	45	46	47	48
UK	3	3,5	4	5	6	7	7,5	8	9	10	10,5	11	12	13
US	3	4	4,5	5,5	6,5	7,5	8	9	10	10,5	11,5	12	13	13,5
CM	23	23,5	24	25	25,5	26	26,5	27	28	28,5	29,5	30	31	31,5



**PROTECTS &
INCREASES
COMFORT**



WR

Waterproof safety shoes



WATER REPELLENT UPPERS

Safety shoes with a water repellent upper



ANTISTATIC

Antistatic safety shoes



SRC/SRA

Safety shoes with a slip resistant outsole



TOECAP

Safety shoes with a composite, steel, aluminium or nano carbon toecap



PUNCTURE RESISTANCE

Safety shoes with a puncture resistant outsole



BREATHABLE UPPERS

Safety shoes with a breathable upper



HEEL ENERGY ABSORPTION

Safety shoes with heel energy absorption



OIL AND FUEL RESISTANT

Safety shoes with an oil and fuel resistant outsole



ESD

Safety shoes with ElectroStatic Discharge



METAL FREE

Metal free safety shoes



COOLMAX®

Coolmax® is a material which effectively drains perspiration.



SYMPATEX®

Sympatex® makes the shoe 100% water proof, increases the breathability and ensures dry feet.

Архангельск (8182)63-90-72
Астана (7172)727-132
Астрахань (8512)99-46-04
Барнаул (3852)73-04-60
Белгород (4722)40-23-64
Брянск (4832)59-03-52
Владивосток (423)249-28-31
Волгоград (844)278-03-48
Вологда (8172)26-41-59
Воронеж (473)204-51-73
Екатеринбург (343)384-55-89

Иваново (4932)77-34-06
Ижевск (3412)26-03-58
Иркутск (395)279-98-46
Казань (843)206-01-48
Калининград (4012)72-03-81
Калуга (4842)92-23-67
Кемерово (3842)65-04-62
Киров (8332)68-02-04
Краснодар (861)203-40-90
Красноярск (391)204-63-61
Курск (4712)77-13-04
Липецк (4742)52-20-81

Магнитогорск (3519)55-03-13
Москва (495)268-04-70
Мурманск (8152)59-64-93
Набережные Челны (8552)20-53-41
Нижний Новгород (831)429-08-12
Новокузнецк (3843)20-46-81
Новосибирск (383)227-86-73
Омск (3812)21-46-40
Орел (4862)44-53-42
Оренбург (3532)37-68-04
Пенза (8412)22-31-16

Пермь (342)205-81-47
Ростов-на-Дону (863)308-18-15
Рязань (4912)46-61-64
Самара (846)206-03-16
Санкт-Петербург (812)309-46-40
Саратов (845)249-38-78
Севастополь (8692)22-31-93
Симферополь (3652)67-13-56
Смоленск (4812)29-41-54
Сочи (862)225-72-31
Ставрополь (8652)20-65-13

Сургут (3462)77-98-35
Тверь (4822)63-31-35
Томск (3822)98-41-53
Тула (4872)74-02-29
Тюмень (3452)66-21-18
Ульяновск (8422)24-23-59
Уфа (347)229-48-12
Хабаровск (4212)92-98-04
Челябинск (351)202-03-61
Череповец (8202)49-02-64
Ярославль (4852)69-52-93

Киргизия (996)312-96-26-47 Казахстан (772)734-952-31 Таджикистан (992)427-82-92-69

<http://safetyjogger.nt-rt.ru> || sgg@nt-rt.ru